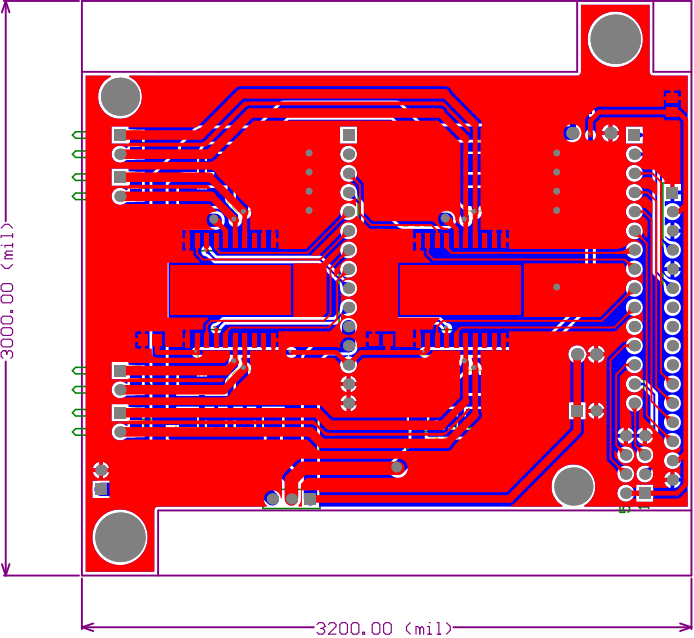


Title FunnyRobot V1.0 Motor Drive Extra Board

Size	Number	Revision
A4		
Date:	2009/10/19	Sheet of
File:	F:\My.PCBs\...Motor.Drive.Extended.Board\FunnyRobotV1.0.SCHDOC	



Bill of Materials

<Parameter Title not found>

Source Data From: Motor.Drive.Extended.Board.for.FunnyRobot.V1.PrjPCB

Project: Motor.Drive.Extended.Board.for.FunnyRobot.V1.PrjPCB

Variant: None

Creation Date: 2009/10/19 17:34:45

Print Date: 40105 40105.73254

Footprint	Comment	LibRef	Designator	Description	Quantity
HDR1X15	Header 15	Header 15	BUSA, BUSB	Header, 15-Pin	2
CAPR5.08-7.8x3.2	Cap Pol1	Cap Pol1	C1	Polarized Capacitor (Radial)	1
CC2012-0805	Cap Semi	Cap Semi	C2, C3, C4, C5, C6, C7, C8, C10	Capacitor (Semiconductor SIM Model)	8
CAPR2.54-5.1x3.2	Cap Pol1	Cap Pol1	C11	Polarized Capacitor (Radial)	1
HDR2X4_CE N	Header 4X2A	Header 4X2A	COM	Header, 4-Pin, Dual row	1
DSO-C2/X2.3	1N5822	D Schottky	D1, D2, D3, D4, D5, D6, D7, D8, D9, D10, D11, D12, D13, D14, D15, D16	Schottky Diode	16
HDR1X2	Header 2	Header 2	EXBAT, FAN	Header, 2-Pin	2
HDR1X3	Header 3	Header 3	JMotor	Header, 3-Pin	1
POWERSO20	L298P	L298P	L298-1, L298-2	Dual Full Bridge Driver	2
HDR1X16	Header 16	Header 16	LCD	Header, 16-Pin	1
HDR1X2H	Header 2	Header 2	M1, M2, M3, M4	Header, 2-Pin	4
					39

Approved _____ Notes _____

--	--	--

